

VRmagic/Lachnith

Eyesi® Slit Lamp simulator

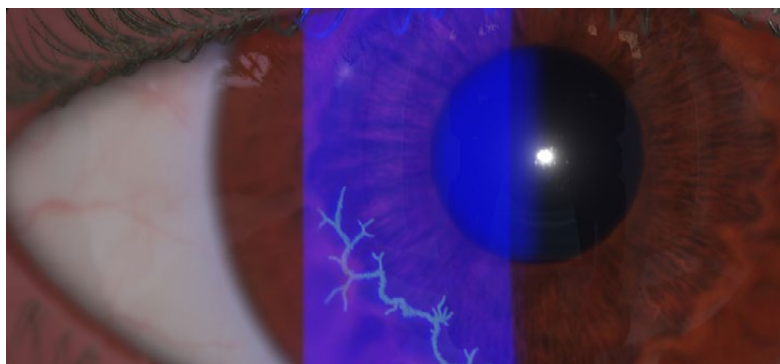
Eyesi Slit Lamp

High-End Simulator for Training of Eye Examinations

Eyesi® Slit Lamp is a virtual reality simulator for training of eye examinations. Using the embedded curriculum, trainee ophthalmologists and optometrists can practice both the complex handling of a slit lamp and recognition of relevant clinical pictures.

All Functions of a Real Slit Lamp

Integrated in the original hardware of the slit lamp model BQ 900 from Haag-Streit Diagnostics, the simulator offers all functions of a real slit lamp. The simulator software simulates the anatomical structures of the eye and their microscopic visualization in real time. As with the original slit lamp, the simulator permits variation of the slit width, length and brightness and the brightness of the ambient light as well as the use of fluorescein and filters.



Available in Fall 2019

Cornea and Conjunctiva

The first release of Eyesi Slit Lamp in fall 2019, will feature sclera, lids and lashes of healthy eyes, as well as around 20 cases of corneal and conjunctival pathologies.

Outlook Posterior Segment and Gonioscopy

In 2020, VRmagic will add a 90D lens to inspect the posterior segment of the eye and according pathologies. Further extensions will include the development of a gonioscope simulator for inspection of the iridocorneal angle and a tonometer simulator that will allow students to practice measurement of the intraocular pressure.

For more information, please contact



VRmagic GmbH, Germany
Phone +49 621 400 416-0
info@vrmagic.com
www.vrmagic.com